



Dreaming in Color

BY ALICE SULLIVAN

PHOTOGRAPHY BY ELIZABETH ENDICOTT

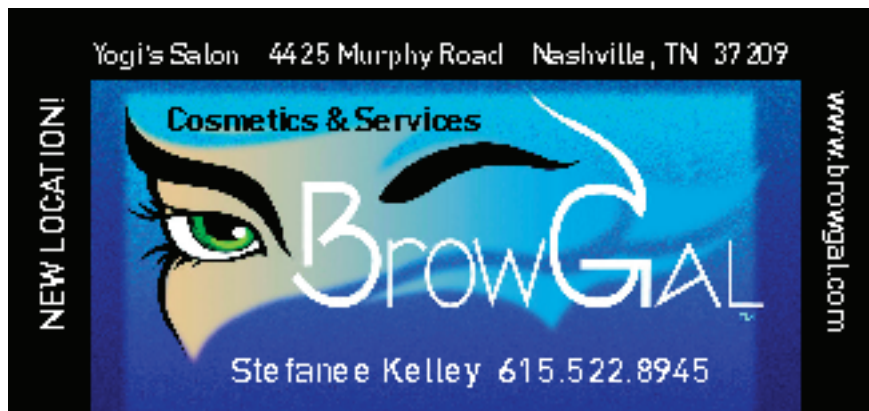
A Historic Home's Beautiful Gardens
on the Banks of the Harpeth River



A wise person once said that a garden is a thing of beauty and a job forever. But what better occupation is there than caring for a garden? Carol and Allen Reynolds' home is impressive to behold. Built in 1805, the two-story house is nestled in a bed of tall trees and shares a backyard with the Harpeth River. The Reynolds discovered this historic property 21 years ago and have been perfecting it ever since.

"When we left our old home to move into this one, one of the deals was that I got to bring all my perennials with me," Carol Reynolds says. But as with many gardens, after the first year, the original perennial garden was already too small. So they expanded bit by bit. And the result is now several separate areas that surround the home in crisp colors and rich textures. Provence Lavender, red Knock Out Roses, wisteria, Autumn Ferns, white hostas, apricot impatiens and an abundance of hydrangeas are just a few of the nearly 80 types of plants that grace the landscape, creating a kaleidoscope of color and a sweet, heavenly aroma.

Paul Lively of The Lively Landscape Company began working with Reynolds last year, and although she says she was hesitant at first, Lively made the process enjoyable. "I was really wary about having a landscaper help me because sometimes they want to brow-beat you into doing just what they want to do, but he was so great! He





took into consideration the things I wanted to do. I didn't want to hem his creativity in, so I let him spread his wings a little bit and I feel it was a real collaboration."

The two worked together to create a perennial garden, an area surrounded by boxwoods, several shade gardens, a river patio area, and beds that complement the rustic stone walls. Her favorite plants and colors are repeated in their use throughout the gardens because she wanted structure and cohesiveness. "The last thing I wanted was landscape gone amuck, and you see that sometimes. I like the idea that the same plants are used in different gardens because it draws the eye," she says.

A visionary when it comes to hardscapes and softscapes, Lively's goal was to relate the home and gardens to the overall site. "The house has so much charm and character. The gardens needed to fit in with the historic nature of the property," says Lively.

His favorite area is the perennial garden because it showcases not only so many different colors, textures and heights among the plants and flowers, but also the serpentine stepping-stone pathway adds architectural substance. Lively explains that it's very difficult to have an aesthetic design if you don't have hardscaping such as stone walls, fences, water features, patios and walkways that relate to the architecture of the home. He says the perennial garden reflects "how I feel a landscape should be done—hard and soft coming together as one." And when it does, there's a harmony about it.

Reynolds smiles as she talks about her yard. It is a peaceful place, and in her eyes, the house deserved it. "We are just keepers of the house and the yard, and I wanted to make sure I was putting down good bones for the next gardeners. That's what Paul gave me. He gave me great bones and structure to work with."

Ever the planner, Reynolds is already making lists of what flowers to buy for next year. A gardener's work is truly never done. Thank goodness.

To contact The Lively Landscape Co., visit www.livelylandscape.com or call 615.429.7058. *



THE PORCH COMPANY

Design & Construction

(615) 662-2886

www.PorchCo.com

Building a simpler way of life!



photo by J. Paul Moore